

MONTHLY MEMBERSHIP PROGRESS REPORT

District 325 L

Results as of: 10/31/2023

GMT:

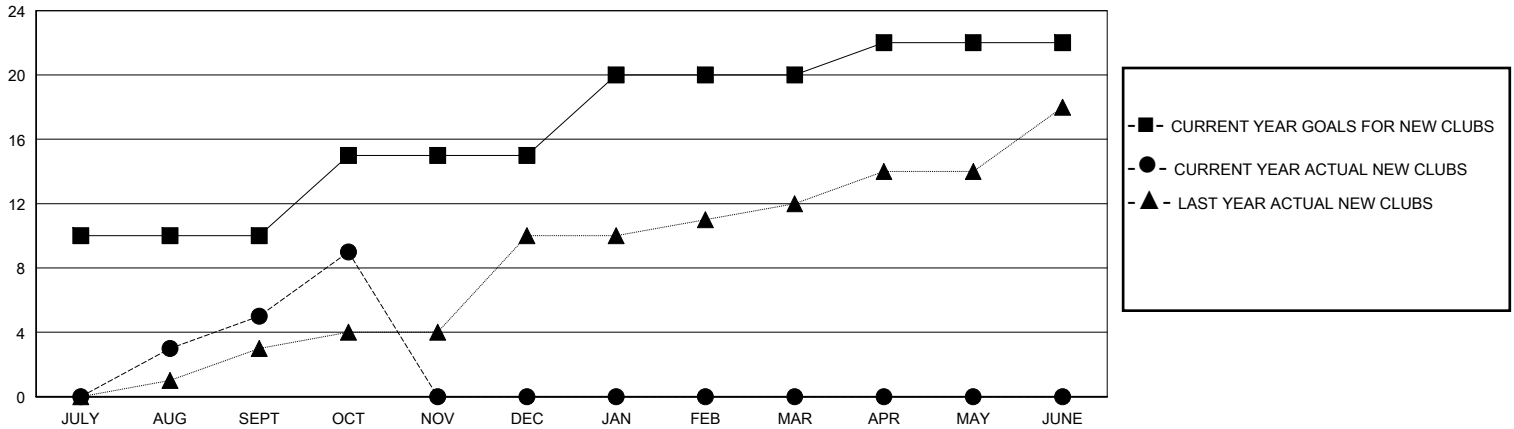
LOCATION NEPAL

GMT CA

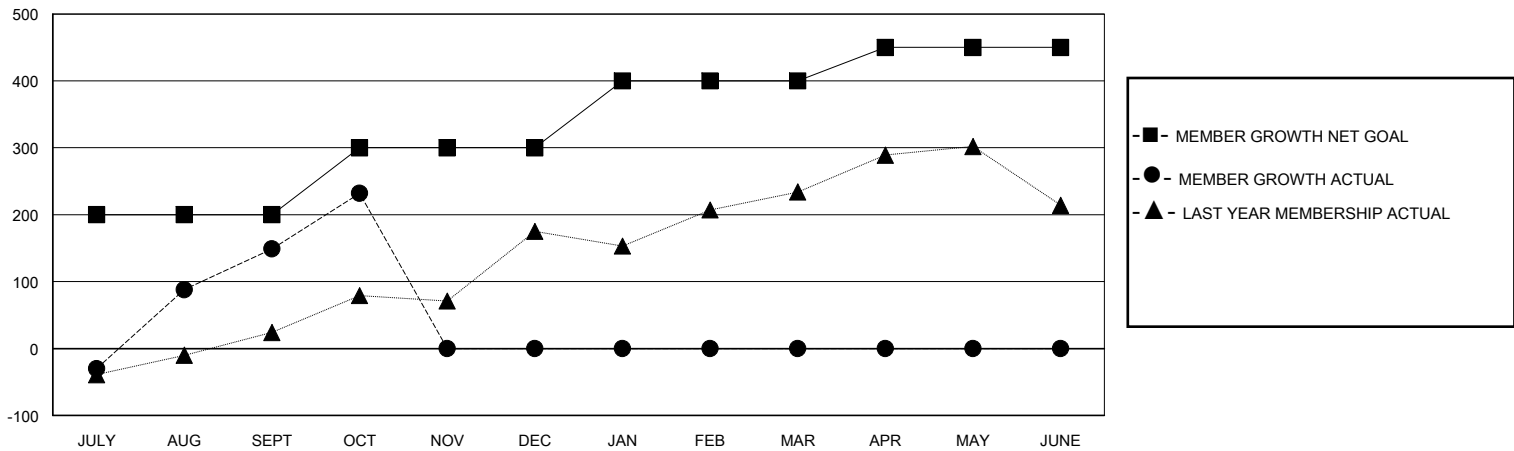
Clubs			
RESULTS FOR 2023-2024			
QUARTER	NEW CLUB GOAL	NEW CLUBS	DROPPED CLUBS
JULY/AUG/SEPT	10	5	2
OCT/NOV/DEC	5	4	0
JAN/FEB/MAR	5	0	0
APR/MAY/JUNE	2	0	0

Members			
RESULTS FOR 2023-2024			
QUARTER	MEMBER GROWTH NET GOAL	MEMBER GROWTH ACTUAL	DROPPED MEMBERS ACTUAL (including transfers)
JULY/AUG/SEPT	200	271	115
OCT/NOV/DEC	100	103	20
JAN/FEB/MAR	100	0	0
APR/MAY/JUNE	50	0	0

GOALS AND ACTUAL NEW CLUBS CUMULATIVE



GOALS AND ACTUAL MEMBERS CUMULATIVE



DROPPED CLUBS: 2	42 CLUBS OF 109 ADDED 1 OR MORE NEW MEMBERS	GENDER DISTRIBUTION	
		MALE 1,870 (71.16%)	FEMALE 738 (28.08%)
DROPPED MEMBERS		CLICK HERE FOR CUMULATIVE MEMBERSHIP DATA	TOTAL FAMILY UNIT MEMBERS 1,966
DECEASED 1	CLUB CANCELLED 18		FAMILY MEMBERS PAYING HALF DUES 1,399
OTHER 116	TOTAL 135		